
THE LFD GROUP

SPHERICAL PLAIN BEARINGS

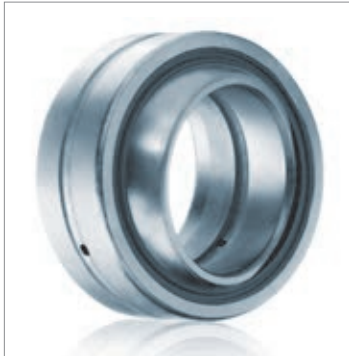
Product Offering



More than 60 Special Solutions.
Individually Optimized Bearings.
Significant Price Advantage.



SIMPLY WELL-ENGINEERED BEARINGS



LFD spherical plain bearings requiring maintenance

the series GE ... E, GE ... ES, GE ... ES-2RS, GE ... FO, GE ... FO-2RS, GE ... HO-2RS, GE ... LO, GE ... SX, GE ... AX

- Sliding contact surface: steel / steel
- Radial spherical plain bearings, axial spherical plain bearings, angular contact spherical plain bearings
- Other designations:
GE ... DO, GE ... DO-2RS, GE ... GS, GE ... GS-2RS, GEH ... ES, GEH ... ES-2RS, GEG ... ES, GEG ... ES-2RS, GEEM ... ES-2RS, GEM ... ES-2RS, GEEW ... ES, GAC ... S, GX ... S



LFD spherical plain bearings maintenance-free

the series GE ... UK, GE ... UK-2RS, GE ... FW, GE ... FW-2RS, GE ... SW, GE ... AW

- Sliding contact surface: hard chromium / PTFE fabric or composite
- Radial spherical plain bearings, axial spherical plain bearings, angular contact spherical plain bearings
- Other designations: GE ... EC, GE ... EC-2RS, GE ... C, GE ... TE-2RS, GE ... TA-2RS, GE ... ET-2RS, GE ... XT-2RS, GEH ... C, GEG ... ET-2RS, GEG ... XT-2RS, GAC ... T, GX ... T



LFD rod ends requiring maintenance + maintenance-free

the series EI ..., EI ...-2RS, EA ..., EA ...-2RS, KI ... / KA ..., KI ... after CETOP, EI ... D, EI ... D-2RS, EA ... D, EA ... D-2RS, KI ... D, KA ... D, KI ... D after CETOP

- Sliding contact surface: steel / steel, steel / bronze, hard chromium / PTFE composite, hard chromium / PTFE fabric, steel / PTFE
- Series E and K
- Other designations: GIR ... DO, GIR ... DO-2RS, GAR ... DO, GAR ... DO-2RS, GIKFR ... PB, GAKFR ... PB, PHS ..., POS ..., GIR ... UK, GIR ... UK-2RS, GAR ... UK, GAR ... UK-2RS, GIKFR ... PW, GAKFR ... PW, PHS ... EC, POS ... EC





LFD hydraulic rod ends

the series GIHR-K ... DO, GIHN-K ... LO, GIHO-K ... DO, IGAS ..., GIHR ... DO, GF ... DO, GK ... DO

- Sliding contact surface: Steel / Steel
- screwable, weldable
- Other designations: TAPR ... U / IHGK ... U / SIR ... ES, TAPR ... CE / IHGK ... CE / SIQG ... ES, SIGEW ... ES, TAPR ... S / IHGK ... S / CGAS ... / WGAS, TAPR ... N / IHGK ... N, TS ... N / IHAGK ... N / SF ... ES, SCF ... ES, TS ... C / IHAGK ... C / SC ... ES, SK ... ES



LFD standardized fasteners

the series CBB ..., CBA ..., PP ..., PPA ..., RC ..., TB ..., TBP ..., TBK ..., RF ..., LD-N ..., BA ..., BS ... SD ...

- Forked bearing block CBB ... 90°/ CBA ... 180°
- Bolts PP... / PPA ... / BA .../ BS ...
- Fork head RC ...
- Axle guard A ...
- Pivot pin bearing block TB ... / LD-N ... / SD ...
- Weld plate TBP ... / TBK ...
- Swiveling bearing block RF ...

Other LFD products

Agricultural parts: upper links, ball joints, ball sockets

Cylinder bases

Clevises DIN 71752, DIN 71751

Angle joints DIN 71802

Hydraulic safety systems: double check valves, pipe rupture protection

Bushings on request



LFD HEADQUARTERS

Germany

Giselherstraße 9 - D 44319 Dortmund

Phone + 49 231 977 250 - Fax + 49 231 977 252 50

Email info@LFD.eu - Internet www.LFD.eu



THE LFD GROUP

The LFD Group is represented on all continents.

In addition to the central warehouse in Germany, the LFD Group also maintains storage capacities in Italy, Spain, France, Hungary, USA, Chile and China. With branch offices around the globe, the LFD Group provides a quick response and short delivery times.

REPRESENTATIONS

USA

Phone + 1 574 245 037 5

usa@LFD.eu

Italy

Phone + 39 049 90 81 400

Fax + 39 049 90 81 444

italy@LFD.eu

Spain

Phone + 34 943 321686

Fax + 34 943 288507

spain@LFD.eu

France

Phone + 49 231 977 250

Fax + 49 231 977 252 50

france@LFD.eu

Hungary

Phone + 36 20 929 857 4

Fax + 36 96 449 310

hungary@LFD.eu

China

Phone + 86 21 584 081 10

Fax + 86 21 584 082 28

shanghai@LFD.eu

Chile

Phone + 56 978 062 089

Fax + 56 259 507 00

chile@LFD.eu